

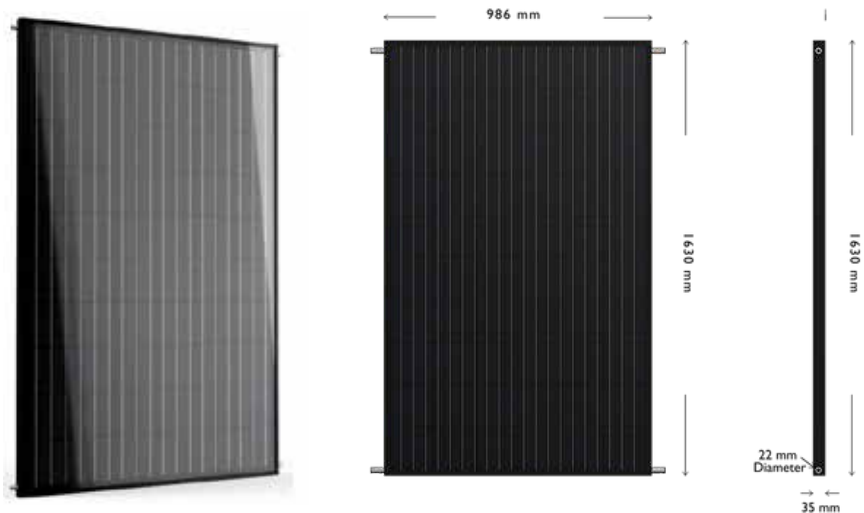
## Features

- Produces more than 4 times the energy of standard PV
- Attracts FiT and non-domestic RHI - double the payback
- Lower hydraulic pressure enabling more modules to be connected
- Low stagnation temperature avoids system overheating and damage
- Slimmest light weight profile PV-T on the market
- Designed to be easy to install and maintain
- High quality recyclable UK product



# Solar Angel DG-01

## PV-T Module (Hybrid PV/Thermal)



### Heat and Power from One Panel

The Solar Angel DG-01 module from Natural Technology Developments offers high performance renewable energy generation at an affordable price. On hot sunny days a PV panel will often reach more than 70°C and there is a 23% drop off in electrical output due to the heating effect; therefore a 245 Wp panel will only produce 190 W. This drop off increases the hotter the panels gets. Cooling the panel allows this effect to be reversed. Consequently Solar Angel PV-T can generate more electricity as well as producing thermal energy, meaning the energy harvesting capability of this module is over four times more than standard PV for each metre<sup>2</sup> of collector area.

What's more, unlike traditional solar thermal this system has been designed not to overheat and cannot exceed more than 85°C. This means that the problems associated with overheating, such as high pressure that puts strain on pipes and components causing leaks and early failure, is avoided. Solar Angel is the future generation, a leaner, greener more natural way to manage your energy requirements.

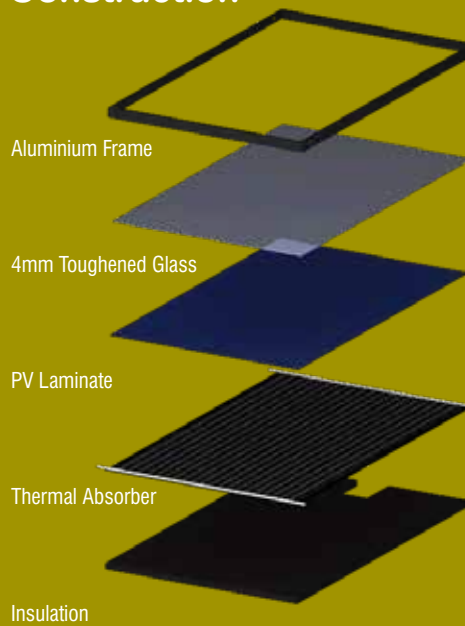
### Durable, future-proof construction

Each Solar Angel module is built to last and manufactured using the highest quality components. Every panel comes with a 25 year performance warranty covering you for the lifetime of your investment. The performance of each panel is rigorously tested before it leaves the factory and stringent quality procedures are in place to ensure a superior product every time. When you choose Solar Angel DG-01, you receive the added assurance of purchasing a product that has been manufactured here in the UK by Romag, a leading UK glass processor specialising in Solar PV and trusted worldwide to provide high quality products.

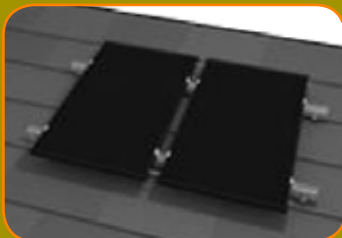
### High quality technical support

And since even the most easy to install panels require an installation support package, you can rely upon our Technical Support Team to provide a knowledgeable and responsive service for true peace of mind.

## Solar Angel PV-T Construction



## Mounting



Pitched roof / On roof



Ground mount / Flat roof



# Solar Angel DG-01 Module Specification

PV Output (Wp) (Polycrystalline)	245
Thermal Output (Wp)	650
Gross collector area (m <sup>2</sup> )	1.61
Absorber area (m <sup>2</sup> )	1.52
Dimensions (mm)	1630 x 986 x 35
Weight - empty (kg)	24
Liquid content (l)	0.82
Glass thickness	4 mm low iron glass
Frame	Black aluminium
Absorber material	Aluminium
Insulation	Closed cell polymer foam
Stagnation temperature (°C)	85
Hydraulic connections	22 mm Compression
Max. operating pressure (bar)	6
Pressure tested to (bar)	15
Flow range l/min	1 - 2.5
Voltage at max power (V)	30.4
Current at max power (A)	8.1
Max system voltage (V)	1000
Over current Protection Rating (A)	12
Material and Processing Warranty	10 Years
Linear Performance Warranty	25 Years

